

Trade Stands Alphabetical

1039 Models	64
55H	9
7mmloco.co.uk	31
AirFramed Glass Display Cases	60
Atkitz	11
Arun's Designs (New for 2026)	39
Bill Hudson Transport Books	36
Brushes 4 Models	63
Buzz Models	27
C & L Finescale Track Building Systems Ltd	49
Coastal DCC	37
Colin McCallum Estate	44
Connoisseur Models	4
D & S Models	52
Dapol Ltd	6
Diane Carney Nameplates	7
Duncan Models	65
Easy-Build Coaches	29
Ellis Clark Trains	22
Ennis 75 Models	8
Finney7	54
First Class Kits	23
Footplate Models	66
Geoff Stratford	53
Gladiator Models	30
Great Eastern Rly. Society	13
Greenwood Track	50
Haywood Railway	46
HMRS	34
Ian Kirk Models	58
Intentio	51
Lanky Kits	24
LCUT Creative	20
Martin Bloxom	48
Masterpiece Models	17
Metalsmith (Leeds) Ltd	62
Midland Railway Society	47
Minerva Model Railways	40
MMM (Made in Manchester Models)	28
Monk's Gate Models	41
Moor View Models	61
MSC Models	59
Nick Tozer Railway Books	3
Northumbrian Painting Service	35
PLM Cast-a-Ways	21
P.R.Model Railway Products	25
Peartree Engineering	42
Peter Clark Models	26
Premier Components	43
Ragstone Models	45
Ray Heard Model Railways	19
S M Models	55
Sanspareil ICS	38
Scale Impressions (New for 2026)	56
Severn Valley Railway	2
Simon's Sort Out	5
Skytrex Ltd	18
Slaters Plastikard Ltd	1
Squires Model and Craft Tools	14
Steamline Ltd	12
TMS Models	10
Tower Collection Blackpool	16
Tower Models	15
Walsall Model Industries	33
Walsworth Models	57
Warren Haywood	32

JUNIORS
Come and drive a train!
L12 There's a fun layout for youngsters to have a go in the café area



Event Guide
Spring Show
2026

L13 is on the first floor

70 ANNIVERSARY
GAUGE O GUILD
FOUNDED 1956

1956 • 2026

Trade Stands by number

Slaters Plastikard Ltd	1	HMRS	34
Severn Valley Railway	2	Northumbrian Painting Service	35
Nick Tozer Railway Books	3	Bill Hudson Transport Books	36
Connoisseur Models	4	Coastal DCC	37
Simon's Sort Out	5	Sanspareil ICS	38
Dapol Ltd	6	Arun's Designs (New for 2026)	39
Diane Carney Nameplates	7	Minerva Model Railways	40
Ennis 75 Models	8	Monk's Gate Models	41
55H	9	Peartree Engineering	42
TMS Models	10	Premier Components	43
Atkitz	11	Colin McCallum Estate	44
Steamline Ltd	12	Ragstone Models	45
Great Eastern Rly. Society	13	Haywood Railway	46
Squires Model and Craft Tools	14	Midland Railway Society	47
Tower Models	15	Martin Bloxom	48
Tower Collection Blackpool	16	C & L Finescale Track Building Systems Ltd	49
Masterpiece Models	17	Greenwood Track	50
Skytrex Ltd	18	Intentio	51
Ray Heard Model Railways	19	D & S Models	52
LCUT Creative	20	Geoff Stratford	53
PLM Cast-a-Ways	21	Finney7	54
Ellis Clark Trains	22	Finney7	54
First Class Kits	23	S M Models	55
Lanky Kits	24	Scale Impressions (New for 2026)	56
P.R.Model Railway Products	25	Walsworth Models	57
Peter Clark Models	26	Ian Kirk Models	58
Buzz Models	27	MSC Models	59
MMM (Made in Manchester Models)	28	AirFramed Glass Display Cases	60
Easy-Build Coaches	29	Metalsmith (Leeds) Ltd	62
Gladiator Models	30	Brushes 4 Models	63
7mmloco.co.uk	31	1039 Models	64
Warren Haywood	32	Duncan Models	65
Walsall Model Industries	33	Footplate Models	66

Societies

S1/T13 Great Eastern Railway Society	S6 78 Derrgate Museum
S2 Great Northern Railway Society	S7 Northampton Society of Model Engineers
S3 7mm Narrow Gauge Association	S8 Telford Steam Railway
S4 Warley MRC	S9/T2 Severn Valley Railway
S5 Scale7 Group	

Guild Stands

G1 Technical and Publications & Guild Library Information	G4 Drive a Train (Lakeside Cafe)
G2 Guild Sales & Membership	G5 Prostate Cancer UK Stand (Foyer)
G3 Bring & Buy	G70 70th Anniversary display

Demonstrators

D1 Brian Bartholomew	Painting and lining Gresley coaches
D2 Brian Clapperton	Loco chassis and gearbox construction
D3 Jon Boot	Plastic, whitmetal and brass wagon building
D4 Robin Taylor	Coach building
D5 Nick Dunhill	Loco building
D6 Nigel Paine	Design and build of NER artillery wagon
D7 Rob Bishop	Soldering techniques

L7 Test Track Nelson Keen and the East Midlands O Gauge Group

Here is an opportunity to test run your own locos or to try out your intended purchases. Most wheel standards are catered for, except S7 or coarse scale and the track has facilities for two rail stud contact or third rail at 12 or 24 volts DC. It is also wired for DCC. Clearances between running lines allows for 16mm scale running on 32mm track. The live steamers will be in attendance, providing some spectacular running.

L8 Gare de Brindille Graham Minshull & Norfolk MRS

Brindille (meaning a twig or branch, in French) is a 16mm scale SM-32 model railway, using 32mm gauge track on which narrow-gauge locomotives and rolling stock run. The layout was originally created by Chris Hopper. It represents a small inglenook shunting layout and represents a First World War WD light railway. The track is from Peco's range, while the rolling stock is a mixture of kit built and 3D printed vehicles. The locomotives are DCC controlled while the points are DC operated. We look forward to exhibiting Gare de Brindille which is a tribute to those who lost their lives in the Great War. Layout size 10ft. X 2ft.



L8 Gare de Brindille

L9 End of the Yard Steve and Joshua Issitt

A small shunting layout, measuring 8ft. X 2ft., set in the late 1960s. The location is fictitious, and does not suggest association with any particular region of BR. Motive power is provided by a couple of elderly tank engines and an 0-6-0 diesel shunter, in green livery and yet to be designated as an 08. The layout backscene depicts a rather foreboding looking and anonymous warehouse. What is stored within is anybody's guess, but whatever it is needs to be transported in covered vans, which proliferate in the shunting yard.



L9 End of the Yard

L10 Pregog Dave Smith

Not so much a layout, more a display showing what was available in O gauge before the formation of the Guild. Mainly tinplate and clockwork, and dating from 1903, the display shows what were essentially playthings, or toy trains, alongside the more serious scale models which gave rise to the advent of model railway layouts, as distinct from train sets. Many of these tinplate trains were cheap, mass-produced products which appeared in the late 1940s, and were sold through stores such as Woolworths, no doubt to the delight of youngsters having endured wartime deprivation. Other examples depicted represent early German imports, British made products by Mettoy, Brittoy and Chad Valley, Bassett-Lowke and Leeds Model Company, and a prize-winning hand-built loco of 1951. Most of the items are from my collection, with contributions from fellow members of the Northants GOG Group.

L11 Exeter St. George Chris & Dave Warner

Exeter Saint George is a compact layout showing how little space you need to depict a fair sized stabling and refuelling point. It is based on Exeter St Davids in 1991. The majority of the traction seen are Class 50s, modelled as they ran at the end of their BR careers. There are also the occasional 33s and 37s and other visitors to the small depot. All the locomotives are DCC sound fitted and have been accurately finished as they were in 1991. The layout measures 10 ft. x 2ft.



L11 Exeter St George

L12/G4 Drive a Train Area (Junior layout) Guild Events Team

Now that the Gauge O Guild encourages under 16s to attend our events for £1, it is important that we ensure that our younger visitors have access to an area of interest. The Drive a Train area, which is within the public seating room called Lakeside, provides hands-on experience with a remote control Thomas the Tank and coaches, plus a remote-control Hymek Big Big and some electric G scale Thomas trains as well. There are also some pictures to colour in and stickers to use so please make sure you visit this area. Over 16s have also been known to have fun too.



L12 Drive a train Area - Junior Layout.

Located in Lakeside Cafe

L13 Colinwood St. Neots MRC Members

Colinwood is a 24 foot section of the Guild Modular Layout, and is named as a tribute to the late Colin McCallum who spearheaded the project. When not part of the continuous circuit, it can be used as a stand-alone end to end layout. To ensure as many club members as possible can run their O Gauge stock, the team aims to show steam in the BR period from 1960 to 1965, but more commonly you will see stock from the 1980s to the 2000s, with preserved stock appearing occasionally on steam rail tours. The location is 'somewhere in Leicestershire'. A fuller description of the concept of modular construction is displayed adjacent to the layout, and members of the team will be on hand to answer questions and hopefully inspire others to consider building their own modules for incorporation into the layout.



L13 Colinwood.

L13 is on the first floor

The layouts

L1 Frimingham *Milton Keynes Model Railway Society*
Frimingham is a fictitious Station on a preserved railway line, somewhere in the southeast. There are a few sidings in this station, but not much shunting is going on. Once there was a connection to a narrow gauge line which brought material from a nearby quarry. The loading ramp still has the narrow gauge track on it. The station building is a great example of a Great Central Line style, with a footbridge and an island platform. If anybody thinks it looks familiar, it is actually a half relief scale reproduction of Brackley Station. The layout is end to end style, each end has a 5 track turntable fiddle yard. The control is Z21.DCC. The layout measures 30ft X 2ft 8in.



L1 Frimingham

L2 Docklands *Andrew Jones / Luton MRC*
'Docklands' is set in the East end of London, around Poplar Docks, and is a small wharf / goods depot, with transhipment between British Railway and the PLA and other private users, and loading into lighters for onward transfer into ships.

The dock was served by the North London Railway but the Great Eastern had running rights, and this joint operation is seen now with locomotives from Devon's Road (LMR) - one of the first in the country to go totally diesel - and Stratford (ER), which continued to supply locomotives when Devon's Road closed.

The time period is 1957 - 1964, covering the transition from steam to diesel, with Class 15s and 20s replacing Jinties and J50s. There are example of Class O4 shunters, from Stratford, which worked the docks, replacing ancient NLR O-6-OTs, as well as other BR diesel shunters.

Various private owned locomotives will also be seen delivering and collecting wagons from the exchange sidings.

In reality this layout was built to try DCC operation, (with its added bonus of sound), in a small space. There are a number of new RTR locomotives which will be seen, together with kit built examples.



L2 Docklands

L3 Cwm Bach *Mark Wilson*
Cwm Bach (Translation: little valley) is a fictional location somewhere in the South Wales Valleys, a few miles from Pontypridd but not to be confused with the real Cwm Bach near Aberdare. The model is presented as a rundown late 1980s single track branch line with a small platform and a DMU service. The line was once double tracked and continued through a tunnel, but that was closed many years ago and only remains today because it is a reversing point for freight, which is mostly civil engineering and waggon repairs. There's no space for a run round loop which necessitates some shunting, and there's generally an O8 or two to be seen. The layout length is 10 feet.



L3 Cwm Bach

L4 Foxbile Brewery *Colin & Margaret French*
Foxbile (anagram of boxfile) Brewery is a minimum space shunting layout, constructed in two box files plus a little extra at the back for a hidden siding. The period is mid 1950s. There are no points, similar to one of my other layouts, which saves space. The small country brewery is connected to the local line and there is enough work for the sidings to be continually shunted. The locomotive used is normally the brewery's own shunting locomotive, and when this is not available, a small loco is borrowed from the local mainline company. (Photo courtesy Paul Bason)



L4 Foxbile

L5 Worcester South Quay *Alan Searle*
A minimum space riverside quay layout, set in the 1930s. The layout represents the final section of the former GWR Worcester Butts branch, which originated from a junction with the GWR Worcester to Hereford mainline, south of Foregate Street Station. Modellers licence has allowed further sidings and a wagon turntable to enhance the scene for operational interest. Trains of general goods can be seen along with cattle wagons to and from the adjacent cattle market. Locomotives and rolling stock are almost entirely kit built with the occasional scratch-built wagon. Control of the track, which is hand-built, and the quayside crane is by DCC using the NCE system. Layout length 7ft. 6in.



L5 Worcester South Quay

L6 Egdean *Jim Edwards*
Egdean is a village near Fittleworth in Sussex, but it did not have a station. The fictitious Southern Railway line was built for the parcels depot and the railway's experimental use of electric traction. The small station has a goods yard for local collections and deliveries. Operation is by DCC with sound. The layout is set in winter time, so everything is covered with a sprinkling of snow. The layout measures 17 feet in length.



L6 Egdean

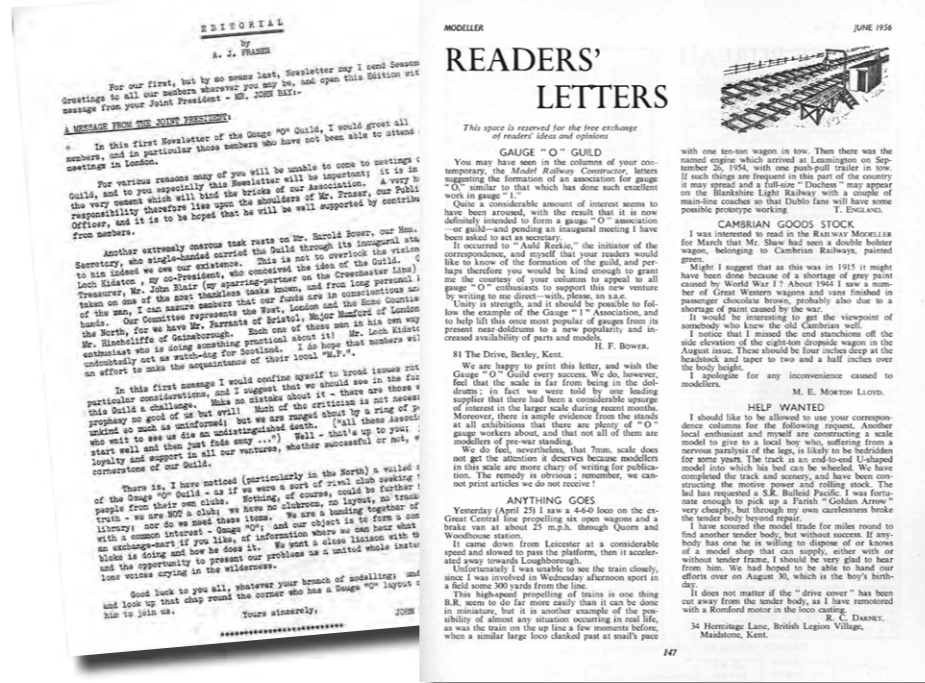
ANNIVERSARY



1956 • 2026

The origins of the Guild and the birth of the Gazette...

To celebrate our Platinum anniversary we have created a timeline display which will appear at all of our 2026 shows. It's a series of historic visual landmarks from the Gauge O Guild's first 70 years and further back to the earliest O gauge models at the turn of the twentieth century.



The editorial in the very first Gazette can be found on page 19 of Gazette Vol16 No7 Spring 2006. Members can find a complete Gazette archive on the Guild website.

The letter in Railway Modeller that started it all. See the May Gazette for more on the early days of the Guild.

The biggest and best 7mm model railway shows

2026

GAUGE O GUILD

SAT 30th MAY

SUMMER SHOW

WIGAN

The Robin Park Leisure Centre, Loire Drive, Newtown, Wigan WN5 0UL

SAT 5th & SUN 6th SEPT

GUILDEX26

Bingley Hall, Stafford Showground, Weston Road, Stafford, ST18 0BD

SAT 12th DECEMBER

WINTER SHOW

KEMPTON PARK

Kempton Park Racecourse, Sunbury-on-Thames TW16 5AQ

For admission prices, to buy an e-ticket or for further information go to:

www.gaugeoguild.com

PROSTATE CANCER UK

The Gauge O Guild is fund raising for Prostate Cancer UK at all of its events and through Just Giving throughout 2026.

Scan the QR code to donate

THE BIGGEST AND BEST SHOWS IN 7MM O GAUGE

Spring Show

KETTERING

EVEN BIGGER IN 2026
MORE DEMOS & LAYOUTS



Worcester South Quay

Kettering Leisure Village, Thurston Drive NN15 6PB

SATURDAY 7TH MARCH 2026

09.30
16.00

SOMETHING FOR EVERYONE O GAUGE LAYOUTS, DEMONSTRATORS, SOCIETIES AND TRADE STANDS

ADMISSION £12 MEMBERS, £12 MEMBERS' PARTNER
£17 NON MEMBERS, NON MEMBERS' PARTNER £17 CHILDREN UNDER 16 £1

www.gaugeoguild.com

ANNIVERSARY



1956 • 2026